

Environmental Justice in the Waste Industry



Upcoming in Webinar

- › Introduction
- › Environmental Justice, The Pollution Problem, and Environmental Racism
- › Environmental Racism, Pollution, and the Communities Affected
- › Air Pollution, Waste, and Adverse Health Affects
- › RTS and Environmental Justice
- › Next Steps



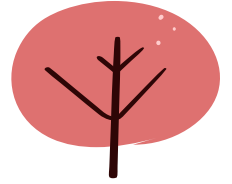
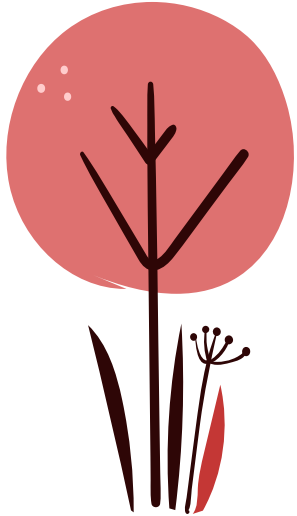


What is Environmental Justice?



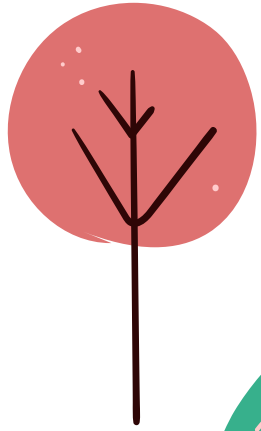
“Environmental justice, for those of you who may not be familiar with the term, goes something like this: no community should be saddled with more environmental burdens and less environmental benefits than any other.”

—Majora Carter



The Problem

Prevalence in Daily Life

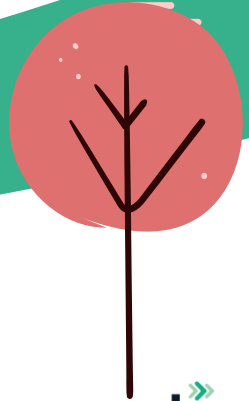




01

Environmental Racism

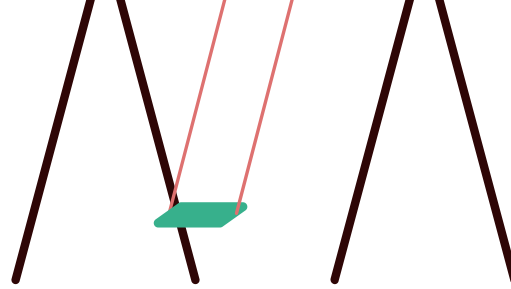
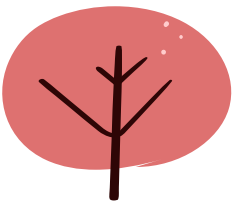
What is it and why is it important?





According to Green Action, **environmental racism** is defined as “the disproportionate impact of environmental hazards on people of color.”






Risk Factors of Environmental Racism

An individual's vulnerability to environmental injustice and environmental racism is largely determined by the following risk factors.

- › Race and/or ethnicity
- › Socioeconomic status
- › Gender
- › Age
- › Housing ownership
- › Employment
- › Occupation
- › Family Structure
- › Education
- › Population Growth
- › Access to medical services
- › Social Dependence





“Life expectancy of poorer, more ethnic neighborhoods is significantly lower than in wealthier more racially homogeneous areas.”

- **Marc N. Gourevitch**

Health Risks

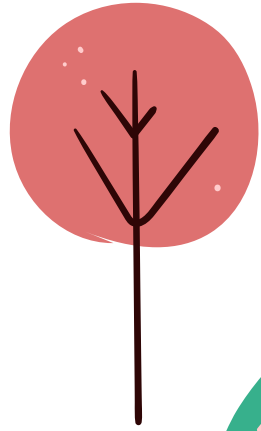
Displacement

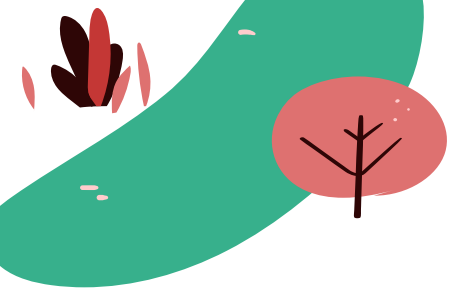
Food Insecurity



02

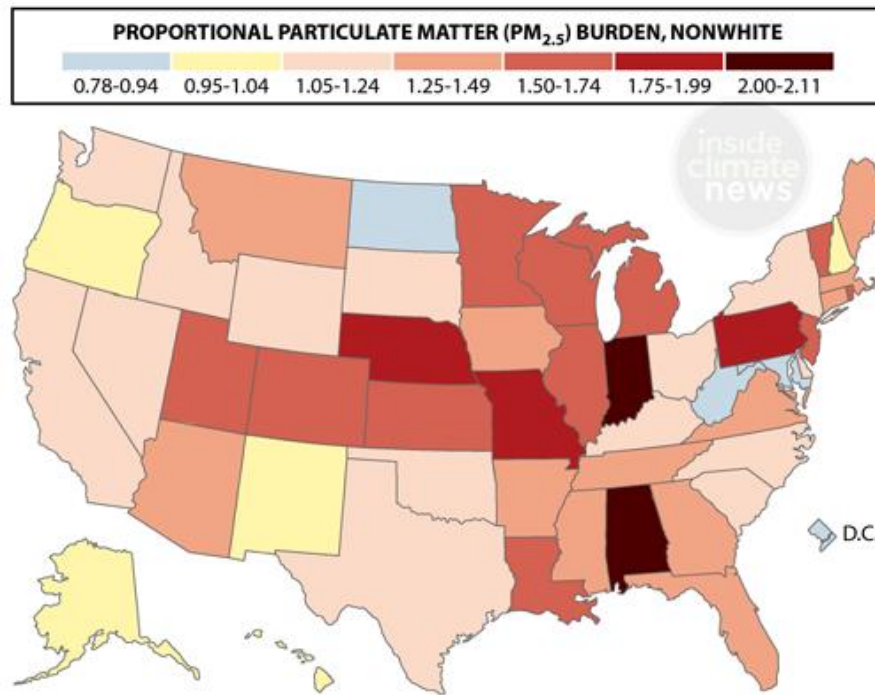
Environmental Racism and Pollution





People of Color Bear Greater Air Pollution Burden

Non-white people face higher exposure to particulate matter air pollution than white people do in all but four states (Maryland, New Mexico, North Dakota, and West Virginia) and Washington, D.C. People of color living in Indiana and Alabama are exposed to roughly twice as much particulate pollution than white people.



SOURCE: Mikati et al, 2018, American Journal of Public Health

Air Quality (Fine Particulate Matter)

Annual average of micrograms of fine particulate matter (PM_{2.5}) per cubic meter (mcg/m³)

HIGHEST

MCG/M³

1	Midtown	14.3
2	Stuyvesant Town and Turtle Bay	12.3
3	Clinton and Chelsea	11.4
4	Financial District	11.1
4	Upper East Side	11.1

LOWEST

MCG/M³

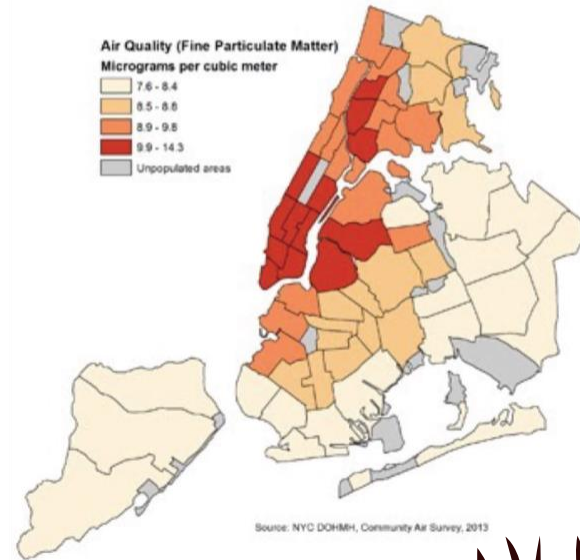
59	Rockaway and Broad Channel	7.6
58	Tottenville and Great Kills	7.8
57	Queens Village	7.9
55	South Ozone Park and Howard Beach	8.0
55	Coney Island	8.0

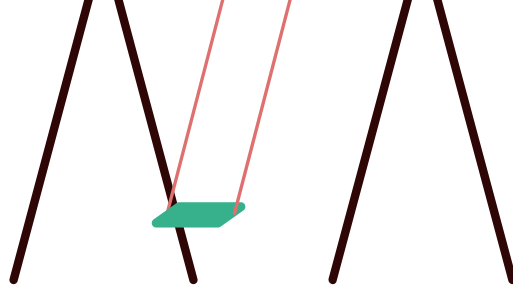
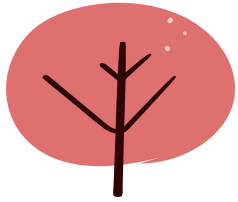
BOROUGH

MCG/M³

Bronx	9.1
Brooklyn	8.7
Manhattan	10.7
Queens	8.4
Staten Island	8.0

NYC Overall : 8.6





Pollution and Ethnic Disparities

There are significant ethnic disparities in exposure to automotive exhaust and ambient air pollution.

- › Union of Concerned Scientists Study: Asian American residents are exposed to twice as much PM_{2.5} as white residents, Latino residents are exposed to 81% more vehicle pollution than their white counterparts, and African American residents to 72% more.

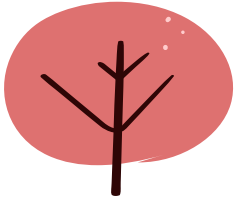


Air Pollution, Waste, and Environmental Racism

Another person's trash is
another person's burden.

03



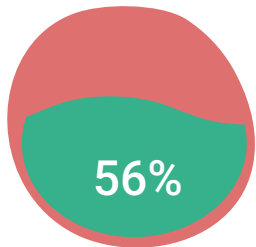


Waste Transportation

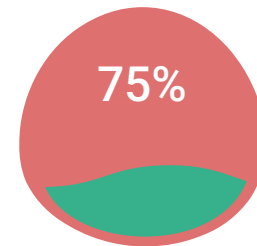
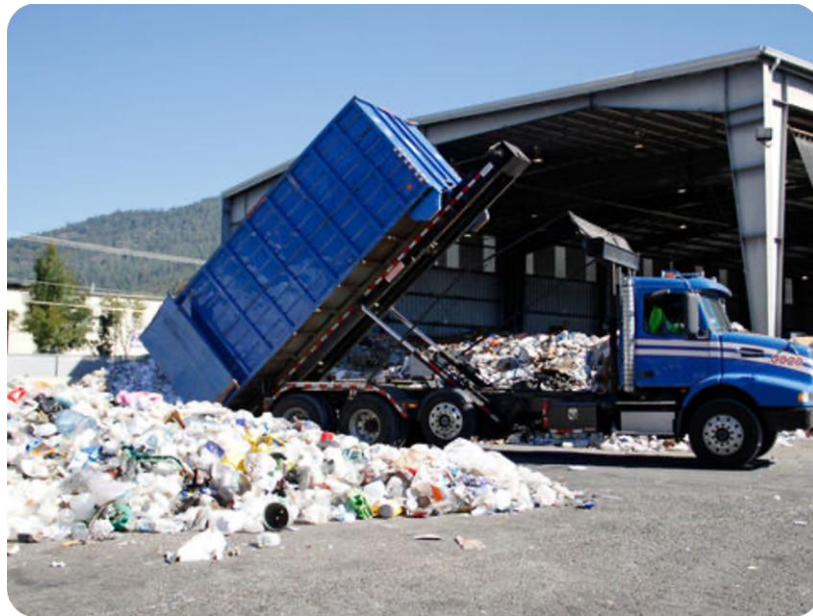
- › More than 10,000 garbage trucks are needed to transport the 12,000 tons of waste generated each day in New York City.
- › Garbage trucks emit about 20 times the carbon emissions of the average US home.
- › Diesel exhaust has been linked to respiratory and cardiovascular problems.



Destination of Waste and Environmental Racism



of people who live within 1.68 miles of a waste facility are people of color



of hazardous waste landfills are in low-income communities of color

Landfills and Environmental Racism



Toxic Waste and Human Health



Birth Defects

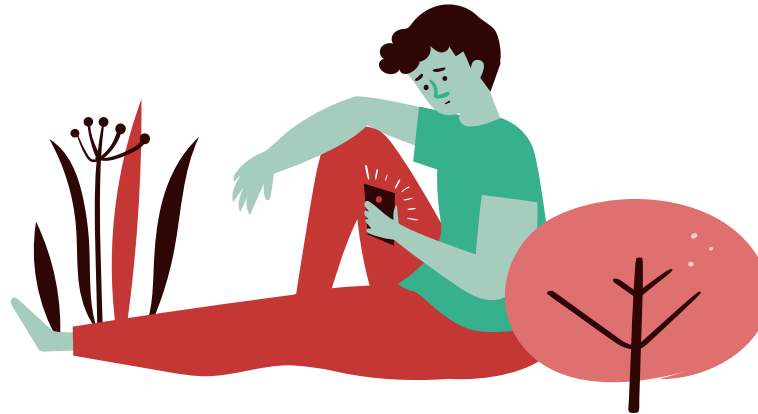
Birth defects have doubled in frequency.

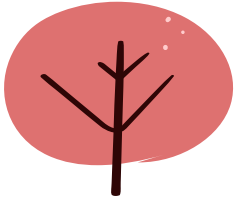
Cancer

Pollution is estimated to contribute to cancer.

Asthma

Has doubled in frequency since 1980's.





What can companies do?

- › Undergo a waste audit
- › Reduce harmful impacts of landfills by partaking in diversion, recycling, reuse, and zero waste opportunities rather than disposal
- › Bringing awareness to environmental injustices and racism



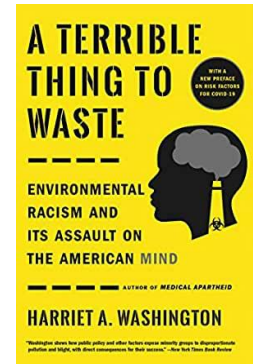
Individual Solutions

- › Reduce your footprint
- › Donate
- › Volunteer
- › Vote
- › Educate yourself



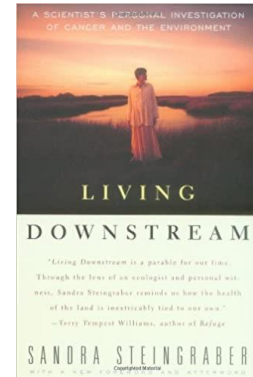
A Terrible Thing to Waste: Environmental Racism and Its Assault on the American Mind

Harriet A Washington



Living Downstream: A Scientist's Personal Investigation of Cancer and the Environment

Sandra Steingraber





Thank You

Questions about this presentation or want to talk about your waste management needs? **Let's talk.**

info@rts.com

